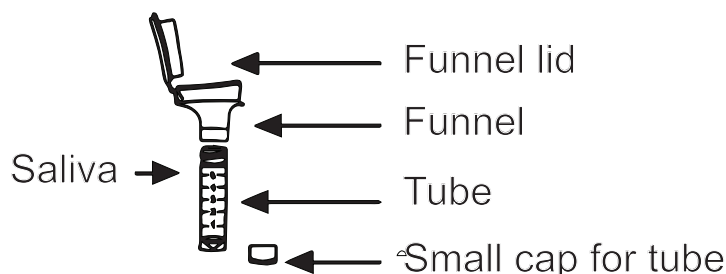


MicroCollect™ Saliva DNA Collection Device User Instructions

The MicroCollect™ Saliva DNA Collection Devices are designed for saliva DNA collection and preservation from the oral cavity. This Collection Device can collect and preserve superior oral samples for molecular detection of DNA, such as q-PCR and high-throughput sequencing.

The MicroCollect™ Saliva DNA Collection Devices are safe, non-invasive, reliable, and easy-to-use collection process. The prefilled collector stabilizes DNA samples and it's simple screwon funnel makes it ideal for safe transport. Users just need to spit the saliva into the collection funnel until the amount of saliva reaches the fill line. The saliva collection tube ensures that a clean and hygienic saliva sample is obtained and well preserved. This product is a ideal saliva collection system and can be widely used at home and R&D laboratories.



Kit components	Size
MicroCollect™ Saliva DNA Collection Devices (cat. 12400)	50 devices
Individual MicroCollect™ Saliva DNA Collection Device Contents	
Collection funnel and collection tube	1
Tube cap	1
preservative	1



- ✓ Painless and non-invasive saliva sampling
- ✓ Soft, good touch feeling in the oral sampling process
- ✓ Easy to operate, sampling can be done at home without any special training
- ✓ Widely used at home and R&D laboratories.
- ✓ A range of applications, like cortisol test, saliva test, treatment monitoring, and inspection of drug and livestock
- ✓ Sample collection and preservation in one convenient kit

Collection Precautions:

Do NOT eat, drink, smoke or chew gum for 30 minutes before giving a saliva specimen. And rinse the mouth with clean water 30 minutes before the saliva collection.

Important: Clean your hands thoroughly before and after sampling, or wear sterile gloves to take the specimen.

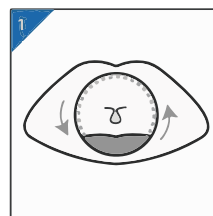
Intended use: For the collection of human DNA from saliva samples.

Contents: Kit contains stabilizing liquid.

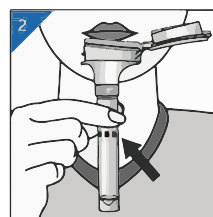
Warnings and precautions: Wash with water if stabilizing liquid comes in contact with eyes or skin. Small cap, choking hazard.

Storage: 15 C -30 C

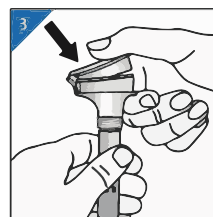
Sampling Procedure:



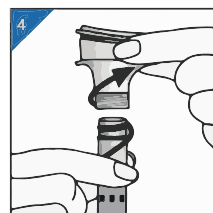
1. Use the tongue to agitate in the mouth and mix saliva thoroughly.



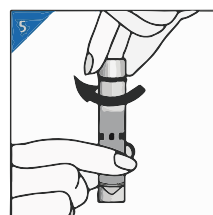
2. Spit until the amount of saliva (not bubbles) reaches the fill line.



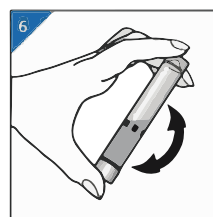
3. Hold the tube upright with one hand, and close the lid tightly with another by pushing down hard on the funnel lid until you hear a click.



4. Unscrew the funnel from the tube.



5. Use small cap to close tube tightly.



6. Shake the capped tube for 5 seconds.

Sample Shipments:

The specimens should be frozen then shipped on dry-ice.

The shipment should be handled in as soon as possible,